

Legend					
	Development Boundary		GLs, Gravels derived from Limestones		TLs, Till derived from limestones
	A, Alluvium		IrSTLs, Irish Sea Till derived from Limestones		TNSSs, Till derived from Namurian sandstones and shales
	Ag, Alluvium (gravelly)		L, Lacustrine sediments		Urban
	As, Alluvium (sandy)		Landfill		Water
	BasEsk, Eskers comprised of gravels of basic reaction		Lsi, Lacustrine silts		Ws, Windblown sands
	Cut, Cut over raised peat		Mbs, Marine beach sands		Wsd, Windblown sands and dunes
	Embankment		Mesc, Estuarine silts and clays		Rck, Bedrock outcrop or subcrop
	GCh, Gravels derived from chert				

V 01	April 2022	PLANNING ISSUE	LA	PK	FO'K
REV.	DATE	DESCRIPTION	PRODUCED BY	REVIEWED BY	APPROVED BY
<small>© Irish Rail (2021). This drawing is confidential and the copyright in it is owned by Irish Rail. This drawing must not be either loaned, copied or otherwise reproduced in whole or in part or used for any purpose without the prior permission of Irish Rail.          © Ordnance Survey Ireland and Government of Ireland. All O.S. data used for plans are printed under "Copyright Ordnance Survey Ireland".          Survey No. 0039721 (OSi Aerial Data or OSi Lidar Data) &amp; Survey No. 2021/OSi_NMA_180 (OSi Vector Data).          All elevations are in metres and relate to OSi Geoid Model (OSGM02) Mean Head as defined by existing Project Control.          All Co-ordinates are in Irish Transverse Mercator Grid (ITM) as defined by OSi active GPS station Tallaght College (TLG).</small>					

Client

Tionscadal Éireann  
Project Ireland  
2040

NTA  
Údaráis Náisiúnta Iompair  
National Transport Authority

Consultant

IDOM

G3

IRÓD  
ROUGHAN & O'DONOVAN

Project

Iarnród Éireann  
Irish Rail

DART+  
West

Drawing Title

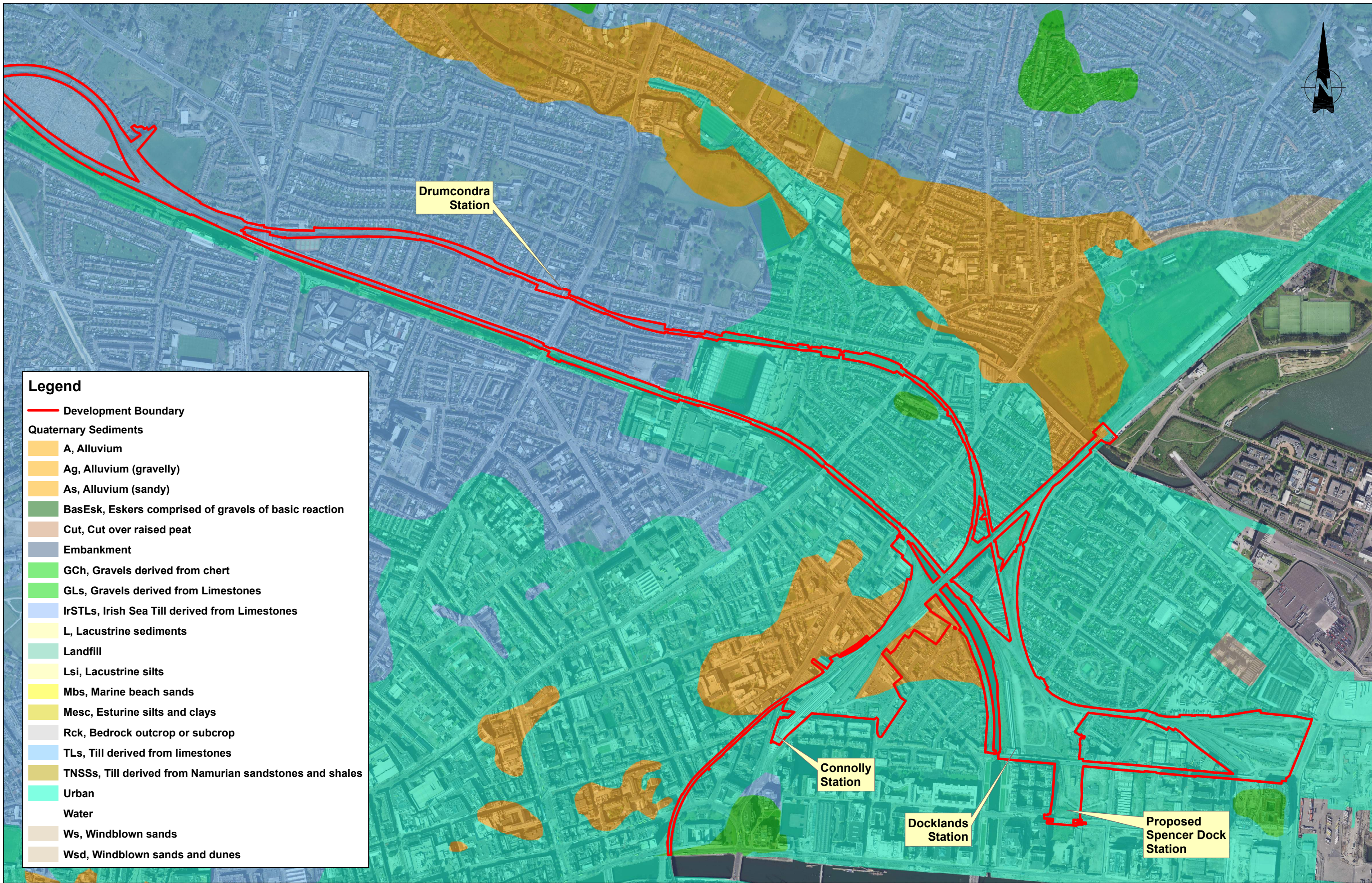
QUATERNARY SEDIMENTS  
OVERVIEW

Scale:  
1:40,000 @ A1; 1:80,000 @ A3

Drawing Number | Project | Originator | Discipline | Location | Type | Role | Number | Phase  
MAY | MDC | GEO | ROUT | DR | G | 91000 | D

Date: April 2022 | Job No: P/101086 | Status: F1 - Approved & Accepted | Rev: V 01 | Sheet: 1 of 1





**Legend**

- Development Boundary
- Quaternary Sediments**
- A, Alluvium
- Ag, Alluvium (gravelly)
- As, Alluvium (sandy)
- BasEsk, Eskers comprised of gravels of basic reaction
- Cut, Cut over raised peat
- Embankment
- GCh, Gravels derived from chert
- GLs, Gravels derived from Limestones
- IrSTLs, Irish Sea Till derived from Limestones
- L, Lacustrine sediments
- Landfill
- Lsi, Lacustrine silts
- Mbs, Marine beach sands
- Mesc, Estuarine silts and clays
- Rck, Bedrock outcrop or subcrop
- TLs, Till derived from limestones
- TNSSs, Till derived from Namurian sandstones and shales
- Urban
- Water
- Ws, Windblown sands
- Wsd, Windblown sands and dunes

V 01	April 2022	PLANNING ISSUE	LA	PK	FO'K
REV.	DATE	DESCRIPTION	PRODUCED BY	REVIEWED BY	APPROVED BY

© Irish Rail (2021). This drawing is confidential and the copyright in it is owned by Irish Rail. This drawing must not be either loaned, copied or otherwise reproduced in whole or in part or used for any purpose without the prior permission of Irish Rail.  
 © Ordnance Survey Ireland and Government of Ireland. All O.S. data used for plans are printed under "Copyright Ordnance Survey Ireland" Survey No. 0039721 (OSI Aerial Data or OSi Lint Data) & Survey No. 202108, NIMA, 198 (OSi Vector Data).  
 All elevations are in metres and relate to OSi Geoid Model (OSGM02). Main: Head as defined by existing Project Control.  
 All Co-ordinates are in Irish Transverse Mercator Grid (ITM) as defined by OSi active GPS station Tallaght College (TLLG).

Client  
 Tionscail Éireann  
 Project Ireland  
 2040

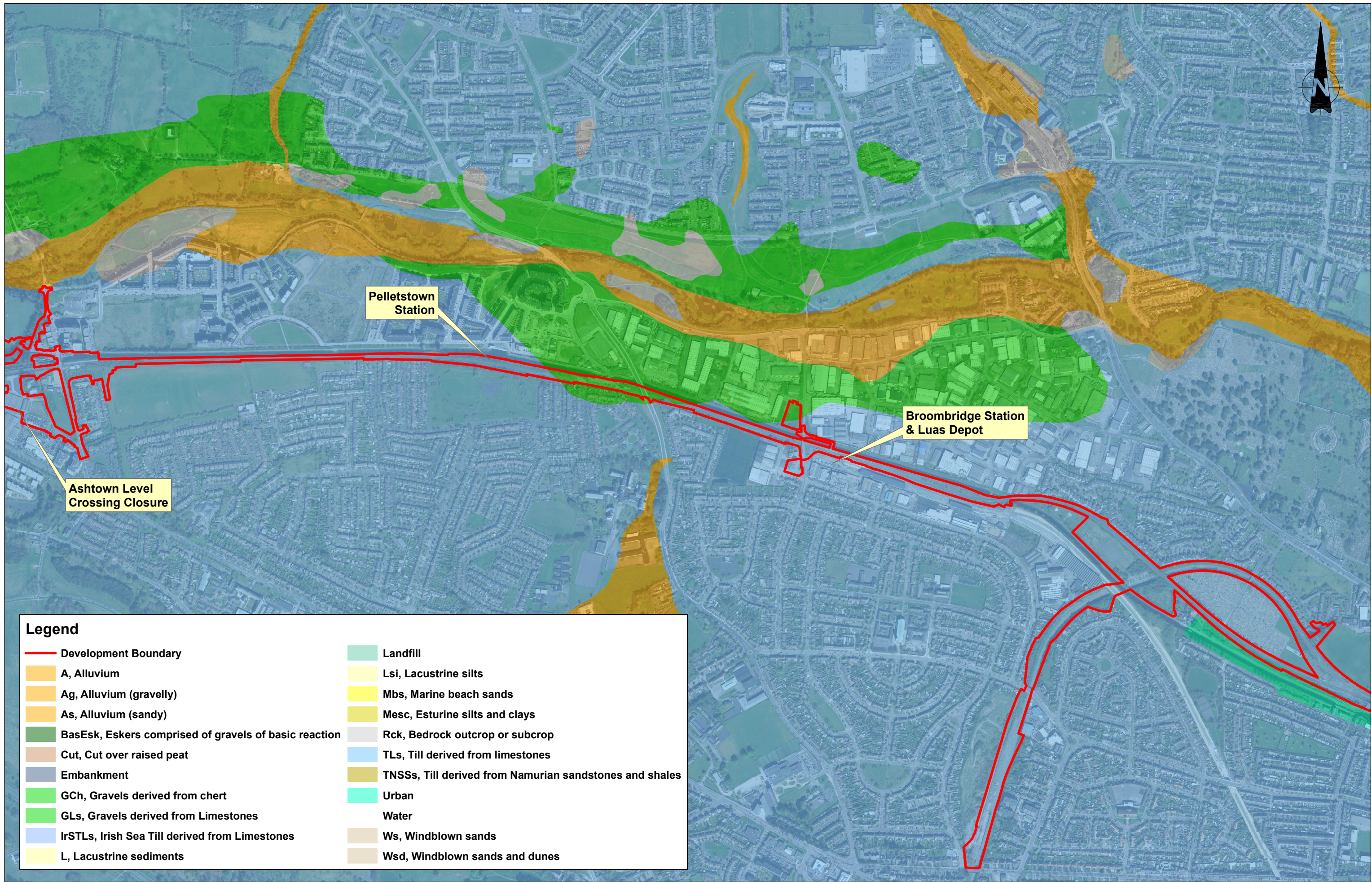


Drawing Title  
 QUATERNARY SEDIMENTS  
 SHEET 1

Scale:  
 1:5,000 @ A1; 1:10,000 @ A3

Drawing Number	Project	Originator	Discipline	Location	Type	Role	Number	Phase
MAY	MDC	GEO	ROUT	DR	G	91001	D	
Date:	Job No:	Status:	Rev:	Sheet:				
April 2022	P/101086	F1 - Approved & Accepted	V 01	1 of 11				





**Legend**

Development Boundary	Landfill
A, Alluvium	Lsi, Lacustrine silts
Ag, Alluvium (gravelly)	Mbs, Marine beach sands
As, Alluvium (sandy)	Mesc, Estuarine silts and clays
BasEsk, Eskers comprised of gravels of basic reaction	Rck, Bedrock outcrop or subcrop
Cut, Cut over raised peat	TLs, Till derived from limestones
Embankment	TNSSs, Till derived from Namurian sandstones and shales
GCh, Gravels derived from chert	Urban
GLs, Gravels derived from Limestones	Water
IrSTLs, Irish Sea Till derived from Limestones	Ws, Windblown sands
L, Lacustrine sediments	Wsd, Windblown sands and dunes

REV.	DATE	DESCRIPTION	LA	PK	FOK
V 01	April 2022	PLANNING ISSUE			
PRODUCED BY REVIEWED BY APPROVED BY					

© Irish Rail (2021). This drawing is confidential and the copyright in it is owned by Irish Rail. This drawing must not be either loaned, copied or otherwise reproduced in whole or in part or used for any purpose without the prior permission of Irish Rail.  
 © Ordnance Survey Ireland and Government of Ireland. All O.S. data used for plans are printed under "Copyright Ordnance Survey Ireland" Survey No. 0039721 (OSi Aerial Data or OSi Lidar Data) & Survey No. 2021108, NMA, 190 (OSi Vector Data).  
 All elevations are in metres and relate to OSi Geoid Model (OSGM02) Mean-High as defined by existing Project Control.  
 All Co-ordinates are in Irish Transverse Mercator Grid (ITM) as defined by OSi active GPS station Tallaght College (TLG).

Client

Consultant

Project

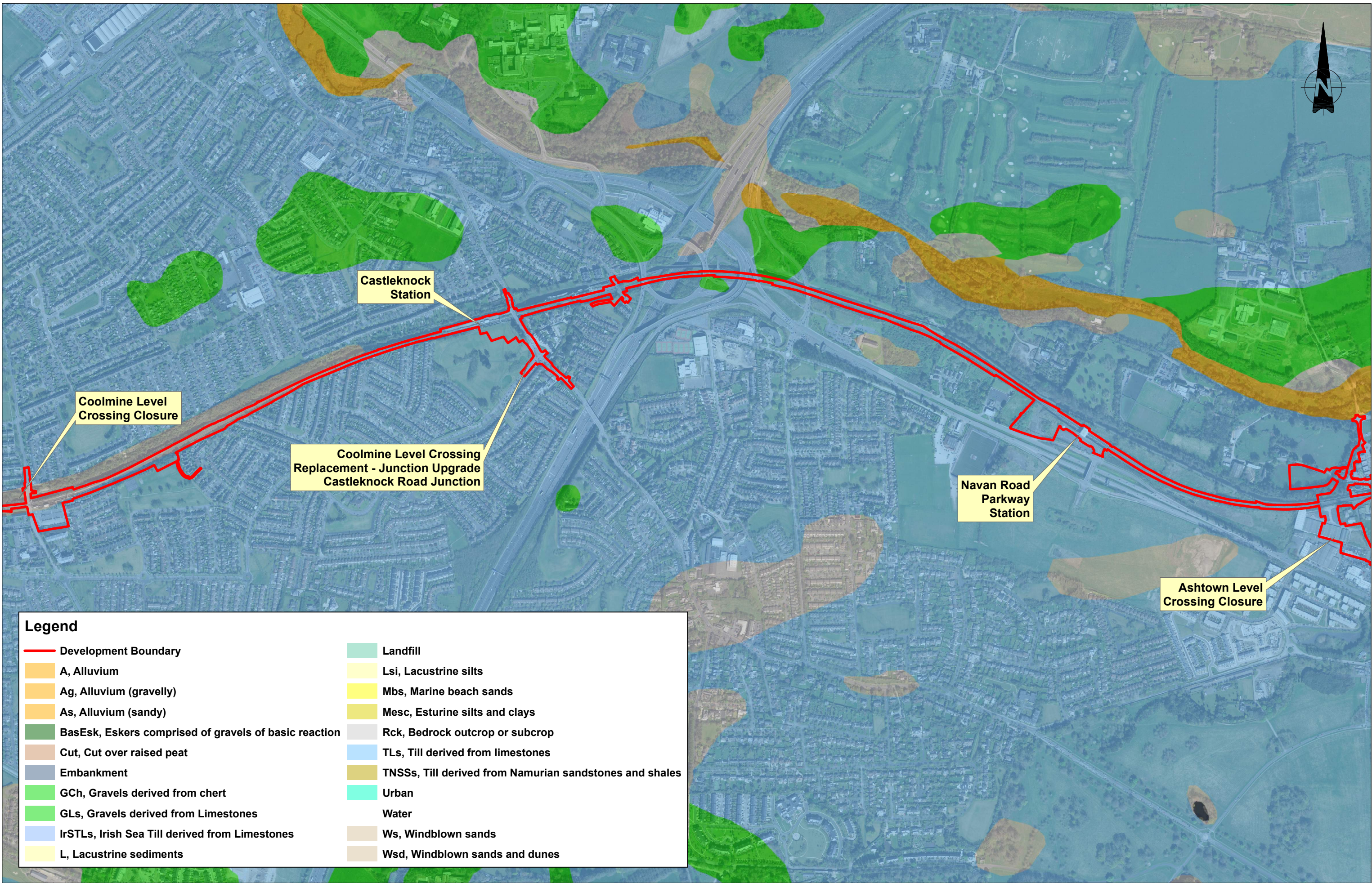
Drawing Title

QUATERNARY SEDIMENTS  
SHEET 2

Scale: 1:5,000 @ A1; 1:10,000 @ A3

Drawing Number	Project	Originator	Discipline	Location	Type	Role	Number	Phase
MAY	MDC	GEO	ROUT	DR	G	91002	D	
Date: April 2022	Job No: P/101086	Status: F1 - Approved & Accepted	Rev: V 01	Sheet: 2 of 11				





### Legend

Development Boundary	Landfill
A, Alluvium	Lsi, Lacustrine silts
Ag, Alluvium (gravelly)	Mbs, Marine beach sands
As, Alluvium (sandy)	Mesc, Estuarine silts and clays
BasEsk, Eskers comprised of gravels of basic reaction	Rck, Bedrock outcrop or subcrop
Cut, Cut over raised peat	TLs, Till derived from limestones
Embankment	TNSSs, Till derived from Namurian sandstones and shales
GCh, Gravels derived from chert	Urban
GLs, Gravels derived from Limestones	Water
IrSTLs, Irish Sea Till derived from Limestones	Ws, Windblown sands
L, Lacustrine sediments	Wsd, Windblown sands and dunes

REV.	DATE	DESCRIPTION	LA	PK	FO'K
V 01	April 2022	PLANNING ISSUE			
PRODUCED BY REVIEWED BY APPROVED BY					

© Irish Rail (2021). This drawing is confidential and the copyright in it is owned by Irish Rail. This drawing must not be either loaned, copied or otherwise reproduced in whole or in part or used for any purpose without the prior permission of Irish Rail.  
 © Ordnance Survey Ireland and Government of Ireland. All O.S. data used for plans are printed under "Copyright Ordnance Survey Ireland" Survey No. 0059721 (OS Aerial Data or OS Lidar Data) & Survey No. 0054005 (NMA, 1:50 (OS) Vector Data).  
 All elevations are in metres and relate to OSi Geoid Model (OSGM02) Mean Head as defined by existing Project Control.  
 All Co-ordinates are in Irish Transverse Mercator Grid (ITM) as defined by OSi active GPS station Tallaght College (TLLG).

Client

Consultant

Project

Drawing Title

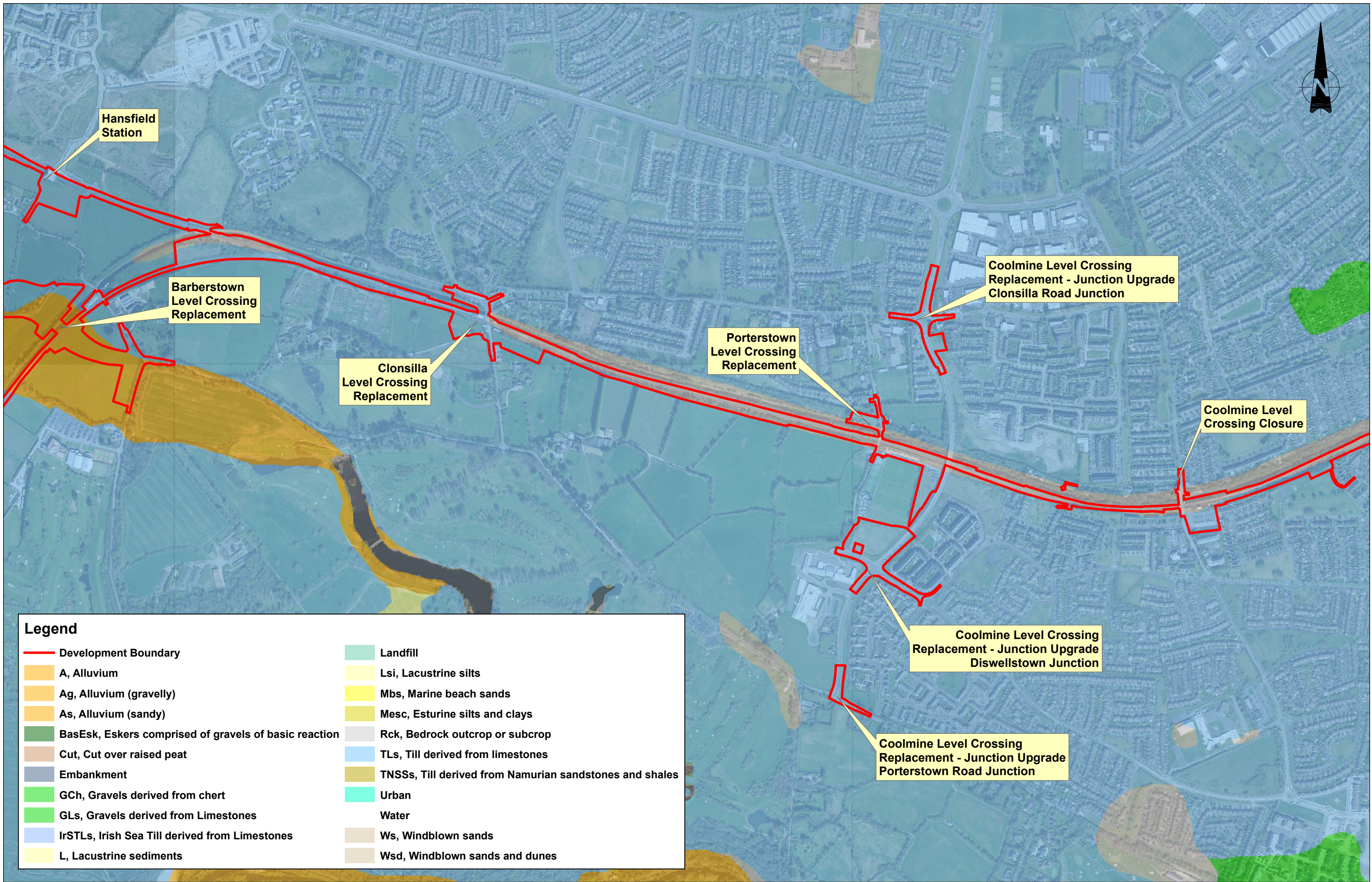
## QUATERNARY SEDIMENTS SHEET 3

Scale: 1:5,000 @ A1; 1:10,000 @ A3

Drawing Number	Project	Originator	Discipline	Location	Type	Role	Number	Phase
	MAY	MDC	GEO	ROUT	DR	G	91003	D

Date:	Job No.:	Status:	Rev.:	Sheet:
April 2022	P/101086	F1 - Approved & Accepted	V 01	3 of 11





**Legend**

Development Boundary	Landfill
A, Alluvium	Lsi, Lacustrine silts
Ag, Alluvium (gravelly)	Mbs, Marine beach sands
As, Alluvium (sandy)	Mesc, Estuarine silts and clays
BasEsk, Eskers comprised of gravels of basic reaction	Rck, Bedrock outcrop or subcrop
Cut, Cut over raised peat	TLs, Till derived from limestones
Embankment	TNSSs, Till derived from Namurian sandstones and shales
GCh, Gravels derived from chert	Urban
GLs, Gravels derived from Limestones	Water
IrSTLs, Irish Sea Till derived from Limestones	Ws, Windblown sands
L, Lacustrine sediments	Wsd, Windblown sands and dunes

REV	DATE	DESCRIPTION	LA	PK	FO'K
V 01	April 2022	PLANNING ISSUE			
PRODUCED BY REVIEWED BY APPROVED BY					

© Irish Rail (2021). This drawing is confidential and the copyright in it is owned by Irish Rail. This drawing must not be either loaned, copied or otherwise reproduced in whole or in part or used for any purpose without the prior permission of Irish Rail.  
 © Ordnance Survey Ireland and Government of Ireland. All O.S. data used for plans are printed under "Copyright Ordnance Survey Ireland" Survey No. 0029721 (OSI Aerial Data or OSI Lint Data) & Survey No. 202108, NIMA, 980 (OSI Vector Data).  
 All elevations are in metres and relate to OSI Geoid Model (OSGM02). Main Head as defined by existing Project Control.  
 All Co-ordinates are in Irish Transverse Mercator Grid (ITM) as defined by OSI active GPS station Tallaght College (TLLG).

Client

Consultant

Project

Drawing Title

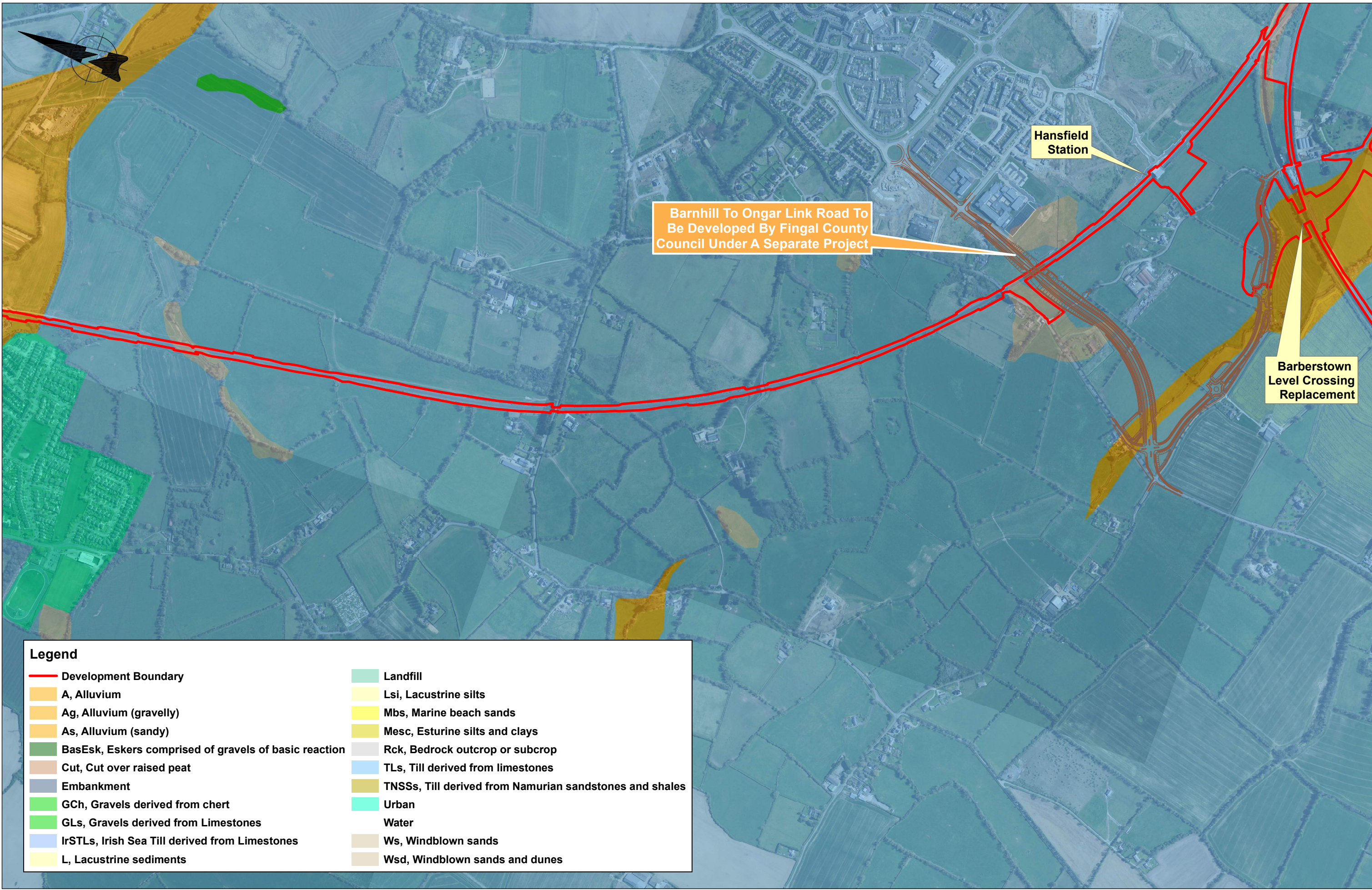
**QUATERNARY SEDIMENTS SHEET 4**

Scale: 1:5,000 @ A1; 1:10,000 @ A3

Drawing Number	Project	Originator	Discipline	Location	Type	Role	Number	Phase
MAY	MDC	GEO	ROUT	DR	G	91004	D	

Date:	Job No:	Status:	Rev:	Sheet:
April 2022	P/101086	F1 - Approved & Accepted	V 01	4 of 11





Barnhill To Ongar Link Road To Be Developed By Fingal County Council Under A Separate Project

Hansfield Station

Barberstown Level Crossing Replacement

Legend	
	Development Boundary
	A, Alluvium
	Ag, Alluvium (gravelly)
	As, Alluvium (sandy)
	BasEsk, Eskers comprised of gravels of basic reaction
	Cut, Cut over raised peat
	Embankment
	GCh, Gravels derived from chert
	GLs, Gravels derived from Limestones
	IrSTLs, Irish Sea Till derived from Limestones
	L, Lacustrine sediments
	Landfill
	Lsi, Lacustrine silts
	Mbs, Marine beach sands
	Mesc, Esturine silts and clays
	Rck, Bedrock outcrop or subcrop
	TLs, Till derived from limestones
	TNSSs, Till derived from Namurian sandstones and shales
	Urban
	Water
	Ws, Windblown sands
	Wsd, Windblown sands and dunes

V 01	April 2022	PLANNING ISSUE	LA	PK	FOK
REV.	DATE	DESCRIPTION	PRODUCED BY	REVIEWED BY	APPROVED BY

© Irish Rail (2021). This drawing is confidential and the copyright in it is owned by Irish Rail. This drawing must not be either loaned, copied or otherwise reproduced in whole or in part or used for any purpose without the prior permission of Irish Rail.  
 © Ordnance Survey Ireland and Government of Ireland. All O.S. data used for plans are printed under "Copyright Ordnance Survey Ireland" Survey No. 003972 (OSi Aerial Data or OSi LIDAR Data) & Survey No. 2011081 (MMA, 180 (OSi Vector Data)).  
 All elevations are in metres and relate to OSi Grid Model (OSGM02) Mean Head as defined by existing Project Control.  
 All Co-ordinates are in Irish Transverse Mercator Grid (ITM) as defined by OSi active GPS station Tallaght College (TLLG).

Client

Consultant

Project

Drawing Title

QUATERNARY SEDIMENTS SHEET 5

Scale: 1:5,000 @ A1; 1:10,000 @ A3

Drawing Number	Project	Originator	Discipline	Location	Type	Role	Number	Phase
MAY	MDC	GEO	ROUT	DR	G	91005	D	

Date:	Job No.:	Status:	Rev.:
April 2022	P/101086	F1 - Approved & Accepted	V 01

Sheet: 5 of 11





Legend					
	Development Boundary		GLs, Gravels derived from Limestones		TLs, Till derived from limestones
	A, Alluvium		IrSTLs, Irish Sea Till derived from Limestones		TNSSs, Till derived from Namurian sandstones and shales
	Ag, Alluvium (gravelly)		L, Lacustrine sediments		Urban
	As, Alluvium (sandy)		Landfill		Water
	BasEsk, Eskers comprised of gravels of basic reaction		Lsi, Lacustrine silts		Ws, Windblown sands
	Cut, Cut over raised peat		Mbs, Marine beach sands		Wsd, Windblown sands and dunes
	Embankment		Mesc, Estuarine silts and clays		Rck, Bedrock outcrop or subcrop
	GCh, Gravels derived from chert				

Client	Tionscald Eireann Project Ireland 2040							
Consultant	IDOM	G3	ROD ROUGHAN & O'DONOVAN					
Project	DART+ West							
Drawing Title	QUATERNARY SEDIMENTS SHEET 6							
Scale:	1:5,000 @ A1; 1:10,000 @ A3							
Drawing Number	Project	Originator	Discipline	Location	Type	Role	Number	Phase
	MAY	MDC	GEO	ROUT	DR	G	91006	D
Date:	April 2022	Job No:	P/101086	Status:	F1 - Approved & Accepted	Rev:	V 01	Sheet: 6 of 11

© Irish Rail (2021). This drawing is confidential and the copyright in it is owned by Irish Rail. This drawing must not be either loaned, copied or otherwise reproduced in whole or in part or used for any purpose without the prior permission of Irish Rail.

© Ordnance Survey Ireland and Government of Ireland. All O.S. data used for plans are printed under "Copyright Ordnance Survey Ireland" Survey No. 0039721 (OSi Aerial Data or OSi LIDAR Data) & Survey No. 20211081\_NIMA\_180 (OSi Vector Data).

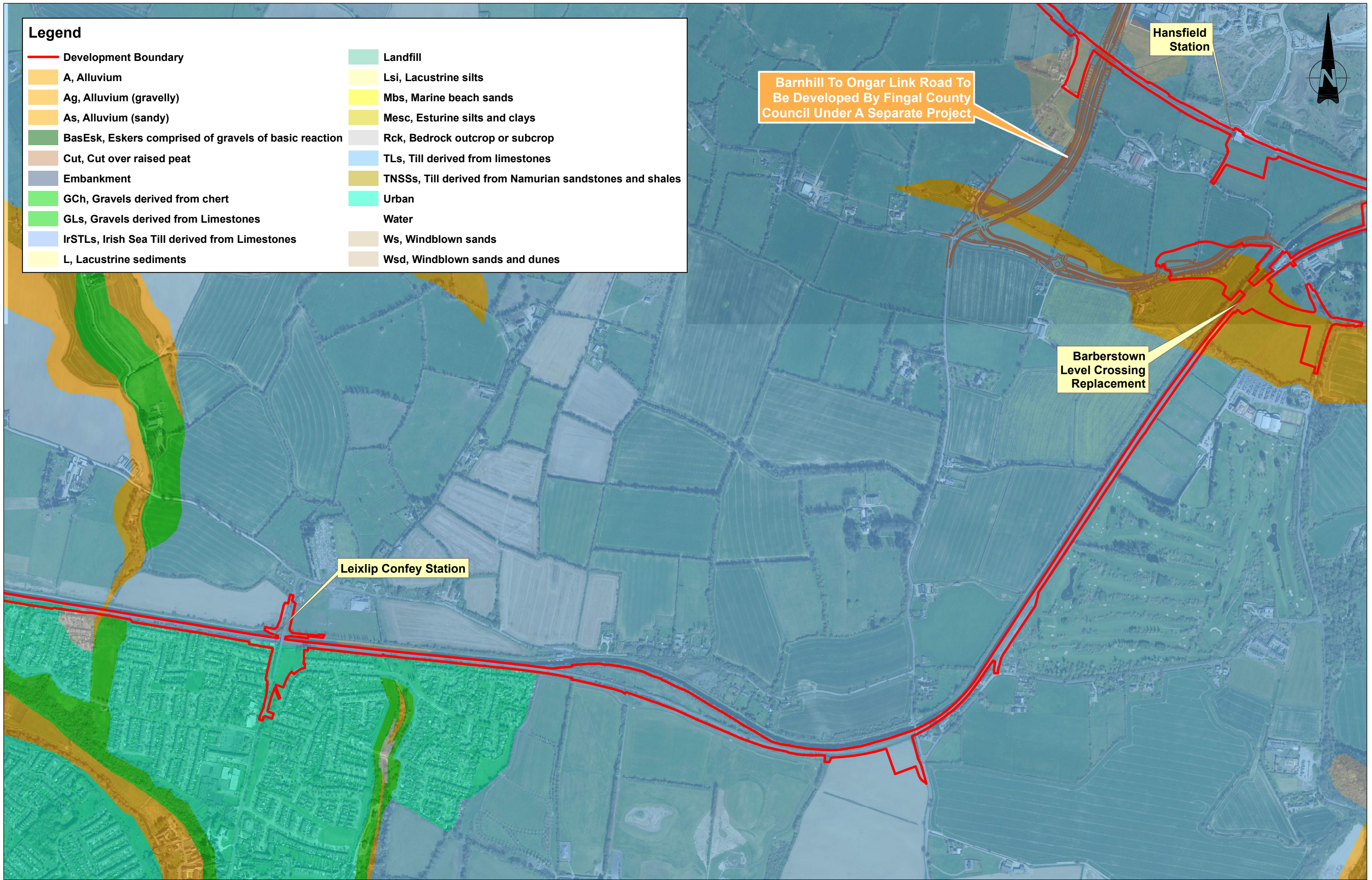
All elevations are in metres and relate to OSi Geoid Model (OSGM02) Mean-High as defined by existing Project Control.

All Co-ordinates are in Irish Transverse Mercator Grid (ITM) as defined by OSi active GPS station Tallaght College (TLLG).



**Legend**

- Development Boundary
- A, Alluvium
- Ag, Alluvium (gravelly)
- As, Alluvium (sandy)
- BasEsk, Eskers comprised of gravels of basic reaction
- Cut, Cut over raised peat
- Embankment
- GCh, Gravels derived from chert
- GLs, Gravels derived from Limestones
- IrSTLs, Irish Sea Till derived from Limestones
- L, Lacustrine sediments
- Landfill
- Lsi, Lacustrine silts
- Mbs, Marine beach sands
- Mesc, Esturine silts and clays
- Rck, Bedrock outcrop or subcrop
- TLs, Till derived from limestones
- TNSSs, Till derived from Namurian sandstones and shales
- Urban
- Water
- Ws, Windblown sands
- Wsd, Windblown sands and dunes



REV.	DATE	DESCRIPTION	LA	PK	FOK
V 01	April 2022	PLANNING ISSUE			
PRODUCED BY REVIEWED BY APPROVED BY					

Client

Tionscadal Éireann  
Project Ireland  
2040

NTA  
Údarán Náisiúnta Iompair  
National Transport Authority

lanróid Éireann  
Irish Rail

Consultant

IDOM

G3

ROD  
ROUGHAN & O'DONOVAN

Project

DART+  
West

Drawing Title

QUATERNARY SEDIMENTS  
SHEET 7

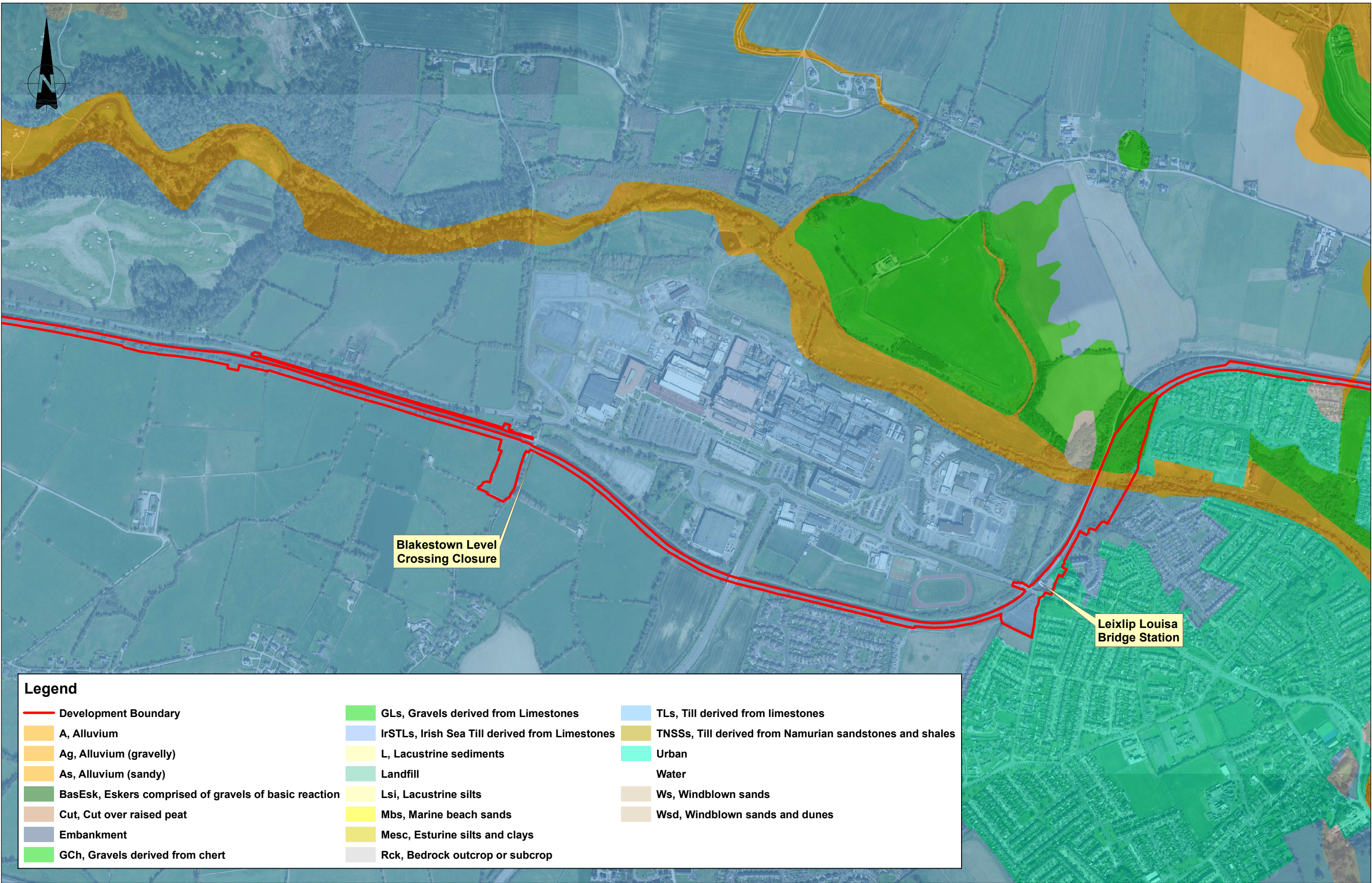
Scale:  
1:5,000 @ A1; 1:10,000 @ A3

Drawing Number | Project | Originator | Discipline | Location | Type | Role | Number | Phase  
MAY | MDC | GEO | ROUT | DR | G | 91007 | D

Date: April 2022 | Job No: P/101086 | Status: F1 - Approved & Accepted | Rev: V 01 | Sheet: 7 of 11

© Irish Rail (2021). This drawing is confidential and the copyright in it is owned by Irish Rail. This drawing must not be either loaned, copied or otherwise reproduced in whole or in part or used for any purpose without the prior permission of Irish Rail.  
© Ordnance Survey Ireland and Government of Ireland. All O.S. data used for plans are printed under "Copyright Ordnance Survey Ireland" Survey No. 0039721 (OSi Aerial Data or OSi LIDAR Data) & Survey No. 2021081\_NMA\_180 (OSi Vector Data).  
All elevations are in metres and relate to OSi Geoid Model (OSGM02). Main Head as defined by existing Project Control.  
All Co-ordinates are in Irish Transverse Mercator Grid (ITM) as defined by OSi active GPS station Tallaght College (TLLG).





Legend					
	Development Boundary		GLs, Gravels derived from Limestones		TLs, Till derived from limestones
	A, Alluvium		IrSTLs, Irish Sea Till derived from Limestones		TNSs, Till derived from Namurian sandstones and shales
	Ag, Alluvium (gravelly)		L, Lacustrine sediments		Urban
	As, Alluvium (sandy)		Landfill		Water
	BasEsk, Eskers comprised of gravels of basic reaction		Lsi, Lacustrine silts		Ws, Windblown sands
	Cut, Cut over raised peat		Mbs, Marine beach sands		Wsd, Windblown sands and dunes
	Embankment		Mesc, Esturine silts and clays		Rck, Bedrock outcrop or subcrop
	GCh, Gravels derived from chert				

Client	Tionscald Eireann Project Ireland 2040							
Consultant	IDOM	G3	ROD					
Project	DART+ West							
Drawing Title	QUATERNARY SEDIMENTS SHEET 8							
Scale:	1:5,000 @ A1; 1:10,000 @ A3							
Drawing Number	Project	Originator	Discipline	Location	Type	Role	Number	Phase
	MAY	MDC	GEO	ROUT	DR	G	91008	D
Date:	April 2022	Job No:	P/101086	Status:	F1 - Approved & Accepted	Rev:	V 01	Sheet: 8 of 11

© Irish Rail (2021). This drawing is confidential and the copyright in it is owned by Irish Rail. This drawing must not be either loaned, copied or otherwise reproduced in whole or in part or used for any purpose without the prior permission of Irish Rail.

© Ordnance Survey Ireland and Government of Ireland. All O.S. data used for plans are printed under "Copyright Ordnance Survey Ireland" Survey No. 0039721 (OSI Aerial Data or OSI Lint Data) & Survey No. 2021036, 988A, 989 (OSI Vector Data).

All elevations are in metres and relate to OSI Geoid Model (OSGM02). Main Head as defined by existing Project Control.

All Co-ordinates are in Irish Transverse Mercator Grid (ITM) as defined by OSI active GPS station Tallaght College (TLLG).





Maynooth Station

**Legend**

- Development Boundary
- A, Alluvium
- Ag, Alluvium (gravelly)
- As, Alluvium (sandy)
- BasEsk, Eskers comprised of gravels of basic reaction
- Cut, Cut over raised peat
- Embankment
- GCh, Gravels derived from chert
- GLs, Gravels derived from Limestones
- IrSTLs, Irish Sea Till derived from Limestones
- L, Lacustrine sediments
- Landfill
- Lsi, Lacustrine silts
- Mbs, Marine beach sands
- Mesc, Esturine silts and clays
- Rck, Bedrock outcrop or subcrop
- TLs, Till derived from limestones
- TNSSs, Till derived from Namurian sandstones and shales
- Urban
- Water
- Ws, Windblown sands
- Wsd, Windblown sands and dunes

V 01	April 2022	PLANNING ISSUE	LA	PK	FO'K
REV.	DATE	DESCRIPTION	PRODUCED BY	REVIEWED BY	APPROVED BY

Client

Consultant

Project

Drawing Title

**QUATERNARY SEDIMENTS  
SHEET 9**

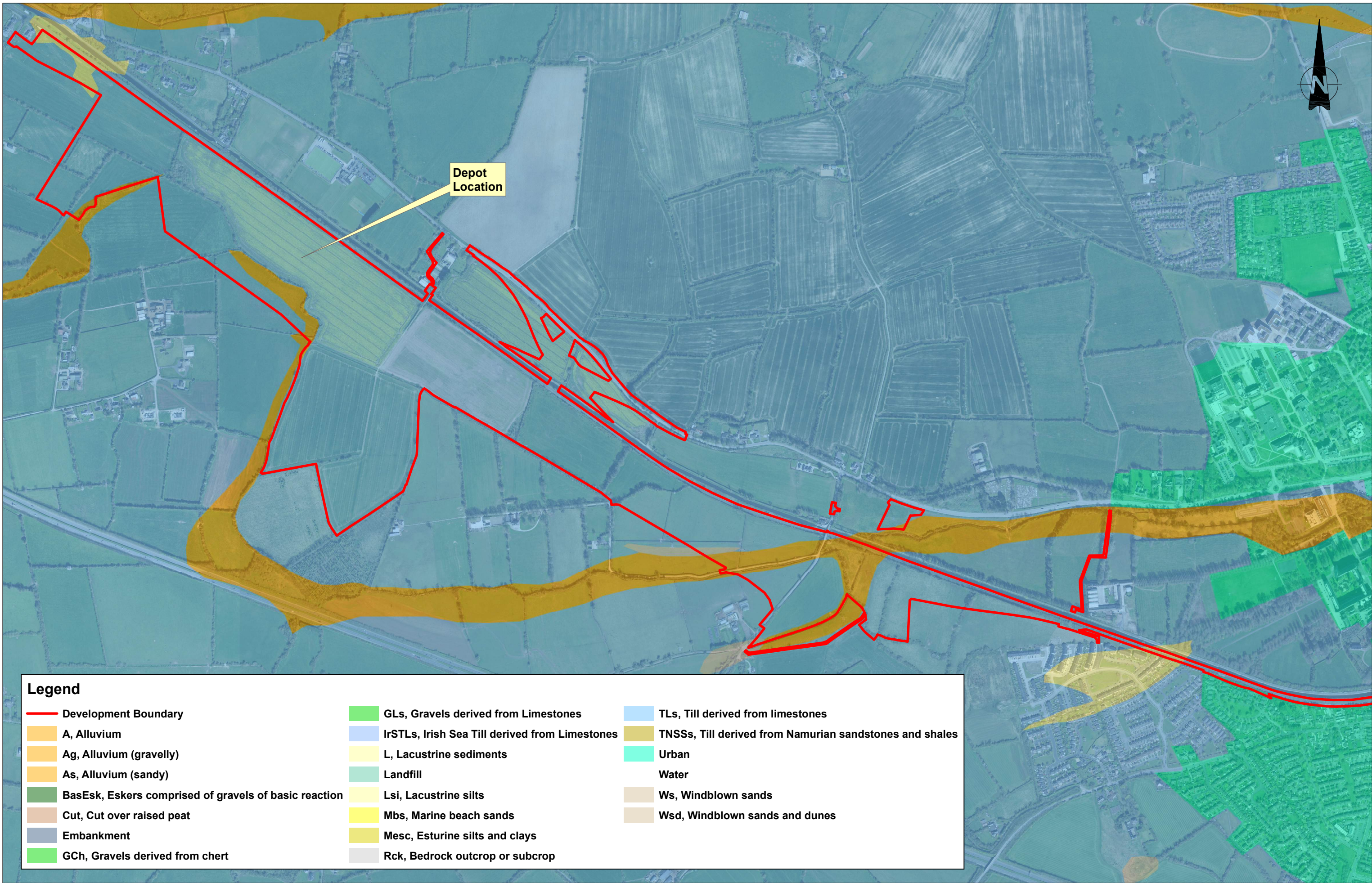
Scale: 1:5,000 @ A1; 1:10,000 @ A3

Drawing Number	Project	Originator	Discipline	Location	Type	Role	Number	Phase
MAY	MDC	GEO	ROUT	DR	G	91009	D	

Date:	Job No:	Status:	Rev:	Sheet:
April 2022	P/101086	F1 - Approved & Accepted	V 01	9 of 11

© Irish Rail (2021). This drawing is confidential and the copyright in it is owned by Irish Rail. This drawing must not be either loaned, copied or otherwise reproduced in whole or in part or used for any purpose without the prior permission of Irish Rail.  
 © Ordnance Survey Ireland and Government of Ireland. All O.S. data used for plans are printed under "Copyright Ordnance Survey Ireland" Survey No. 0039721 (OSi Aerial Data or OSi LIDAR Data) & Survey No. 2021036, NAMA, #80 (OSi Vector Data).  
 All elevations are in metres and relate to OSi Geoid Model (OSiGM02). Main: Head as defined by existing Project Control.  
 All Co-ordinates are in Irish Transverse Mercator Grid (ITM) as defined by OSi active GPS station Tallaght College (TLLG).





**Legend**

- Development Boundary
- A, Alluvium
- Ag, Alluvium (gravelly)
- As, Alluvium (sandy)
- BasEsk, Eskers comprised of gravels of basic reaction
- Cut, Cut over raised peat
- Embankment
- GCh, Gravels derived from chert
- GLs, Gravels derived from Limestones
- IrSTLs, Irish Sea Till derived from Limestones
- L, Lacustrine sediments
- Landfill
- Lsi, Lacustrine silts
- Mbs, Marine beach sands
- Mesc, Esturine silts and clays
- Rck, Bedrock outcrop or subcrop
- TLs, Till derived from limestones
- TNSSs, Till derived from Namurian sandstones and shales
- Urban
- Water
- Ws, Windblown sands
- Wsd, Windblown sands and dunes



REV.	DATE	DESCRIPTION	PRODUCED BY	REVIEWED BY	APPROVED BY
V 01	April 2022	PLANNING ISSUE	LA	PK	FO'K

© Irish Rail (2021). This drawing is confidential and the copyright in it is owned by Irish Rail. This drawing must not be either loaned, copied or otherwise reproduced in whole or in part or used for any purpose without the prior permission of Irish Rail.  
 © Ordnance Survey Ireland and Government of Ireland. All O.S. data used for plans are printed under "Copyright Ordnance Survey Ireland".  
 Survey No. 003972 (OS Aerial Data or OS LIDAR Data) & Survey No. 262108 (MMA, 188 (OS) Vector Data).  
 All elevations are in metres and relate to OS Grid Model (OSGM02) Mean Head as defined by existing Project Control.  
 All Co-ordinates are in Irish Transverse Mercator Grid (ITM) as defined by OSi active GPS station Tallaght College (TLLG).

Client

Consultant

Project

Drawing Title

**QUATERNARY SEDIMENTS  
SHEET 10**

Scale: 1:5,000 @ A1; 1:10,000 @ A3

Drawing Number	Project	Originator	Discipline	Location	Type	Role	Number	Phase
MAY	MDC	GEO	ROUT	DR	G	91010	D	

Date:	Job No:	Status:	Rev:
April 2022	P/101086	F1 - Approved & Accepted	V 01

Sheet: 10 of 11



**Legend**

- Development Boundary
- A, Alluvium
- Ag, Alluvium (gravelly)
- As, Alluvium (sandy)
- BasEsk, Eskers comprised of gravels of basic reaction
- Cut, Cut over raised peat
- Embankment
- GCh, Gravels derived from chert
- GLs, Gravels derived from Limestones
- IrSTLs, Irish Sea Till derived from Limestones
- L, Lacustrine sediments
- Landfill
- Lsi, Lacustrine silts
- Mbs, Marine beach sands
- Mesc, Estuarine silts and clays
- Rck, Bedrock outcrop or subcrop
- TLs, Till derived from limestones
- TNSSs, Till derived from Namurian sandstones and shales
- Urban
- Water
- Ws, Windblown sands
- Wsd, Windblown sands and dunes



**Proposed Main Storage & Distribution Compound Location**

V 01	April 2022	PLANNING ISSUE	LA	PK	FOK
REV.	DATE	DESCRIPTION	PRODUCED BY	REVIEWED BY	APPROVED BY

© Irish Rail (2021). This drawing is confidential and the copyright in it is owned by Irish Rail. This drawing must not be either loaned, copied or otherwise reproduced in whole or in part or used for any purpose without the prior permission of Irish Rail.  
 © Ordnance Survey Ireland and Government of Ireland. All O.S. data used for plans are printed under "Copyright Ordnance Survey Ireland" Survey No. 0039721 (OSi Aerial Data or OSi Laser Data) & Survey No. 2021108, NIMA, 980 (OSi Vector Data).  
 All elevations are in metres and relate to OSi Geoid Model (OSGM02). Main Head as defined by existing Project Control.  
 All Co-ordinates are in Irish Transverse Mercator Grid (TM) as defined by OSi active GPS station Tallaght College (TLG).

Client

Consultant

Project

Drawing Title

**QUATERNARY SEDIMENTS  
SHEET 11**

Scale: 1:5,000 @ A1; 1:10,000 @ A3

Drawing Number	Project	Originator	Discipline	Location	Type	Role	Number	Phase
MAY	MDC	GEO	ROUT	DR	G	91011	D	
Date: April 2022	Job No: P/101086	Status: F1 - Approved & Accepted	Rev: V 01	Sheet: 11 of 11				